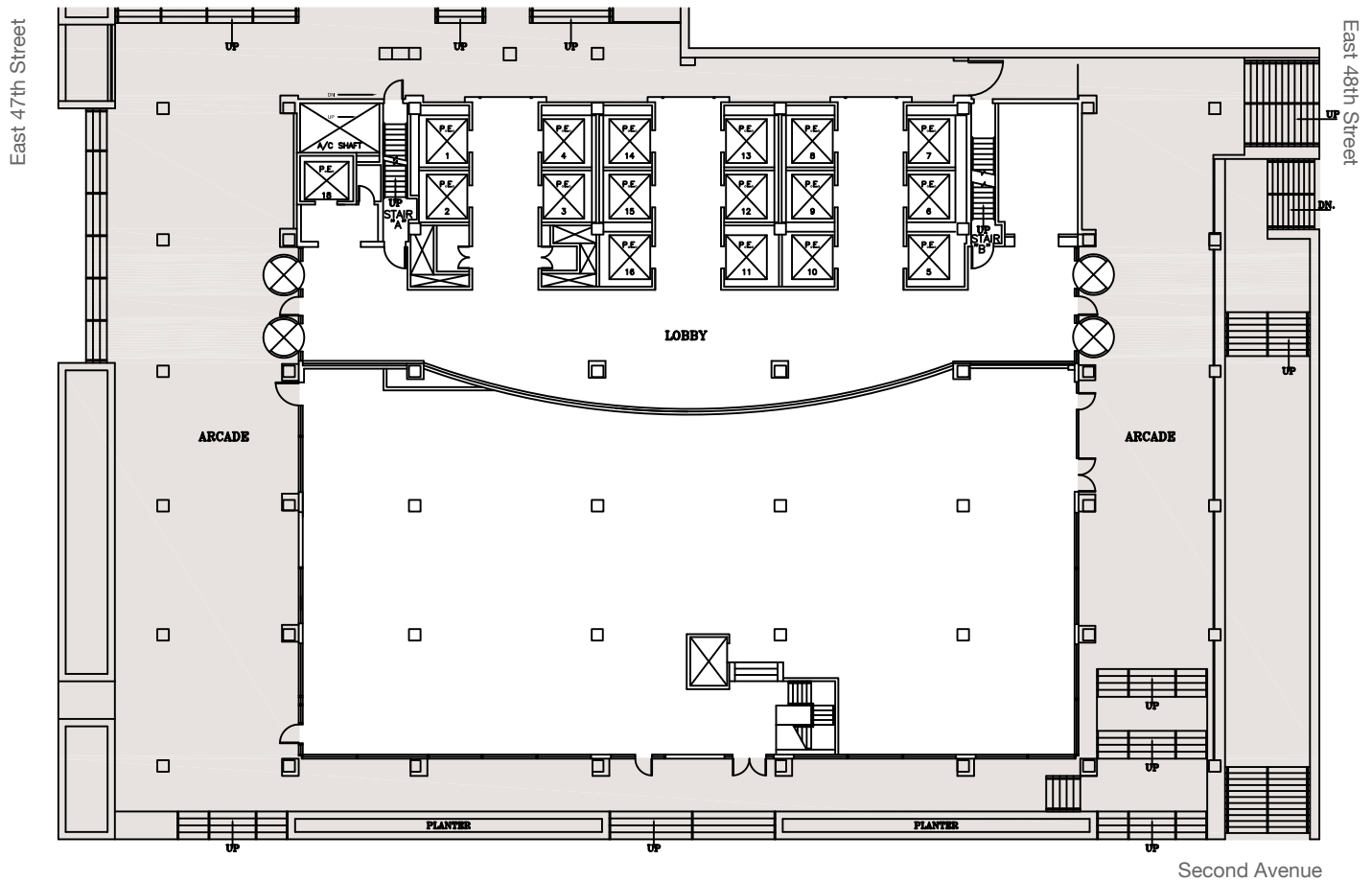


ONE DAG

REDEFINING THE ART OF FIRST CLASS

GROUND FLOOR - 8,000 RSF
 LOWER LEVEL - 2,500 RSF



One Dag Hammar skjold Plaza
 47th and Second Avenue

FOR LEASING:



OFFICE:

Susanne Lieu, 212.293.9417
 slieu@rubenco.com

Jeanine Senecal, 212.293.9420
 jsenecal@rubenco.com

RETAIL:

Kenji Ota, 212.841.5909
 kenji.ota@cushwake.com

Neil Seth, 212.841.5063
 neil.seth@cushwake.com



WWW.ONEDAG.COM